

Budget Cut Years and the Impact on Washington's Community and Technical Colleges

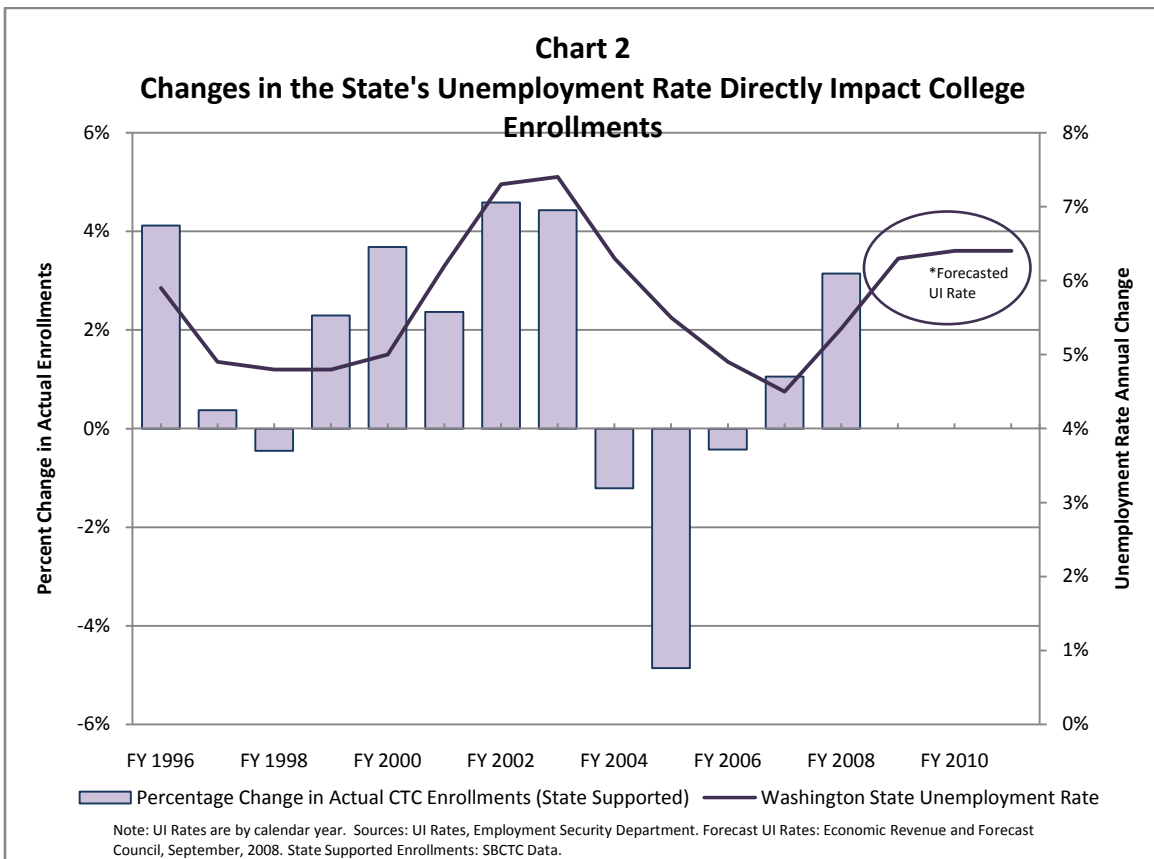
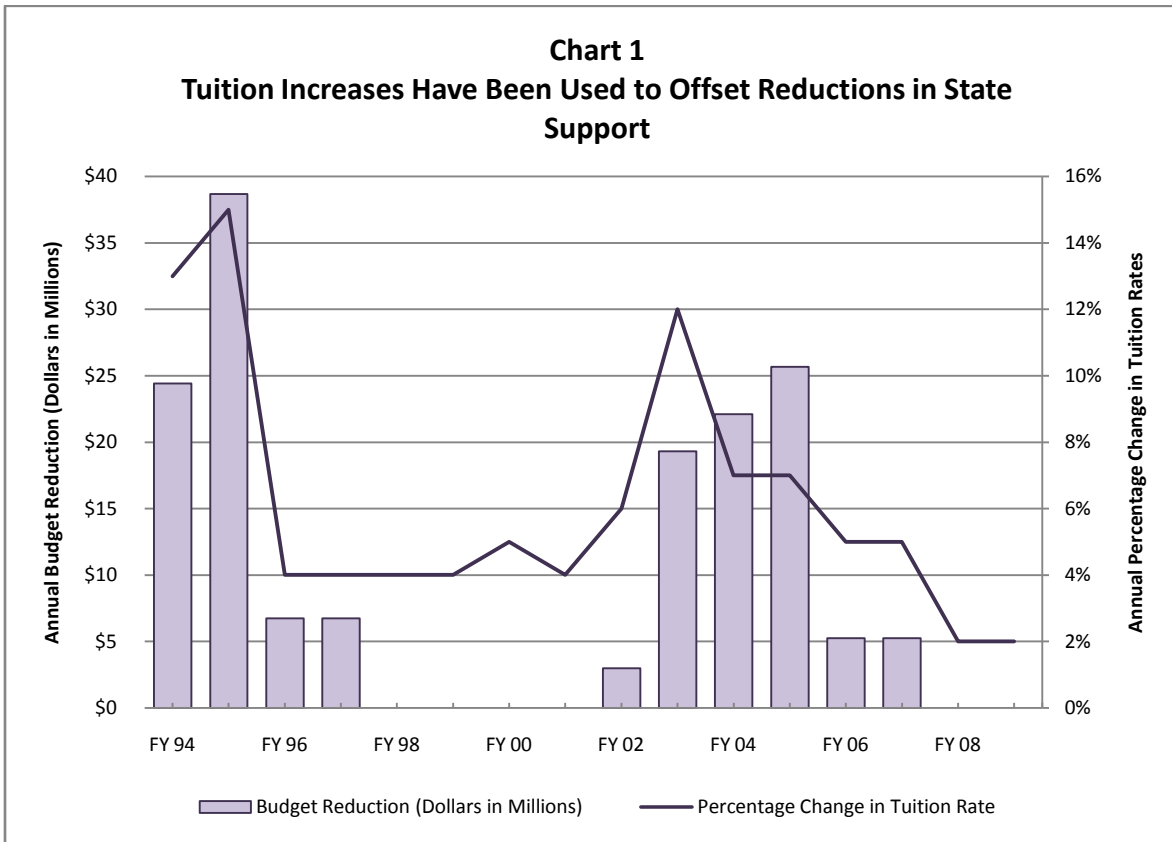


Chart 3
Budget Cuts vs. State Supported Enrollments

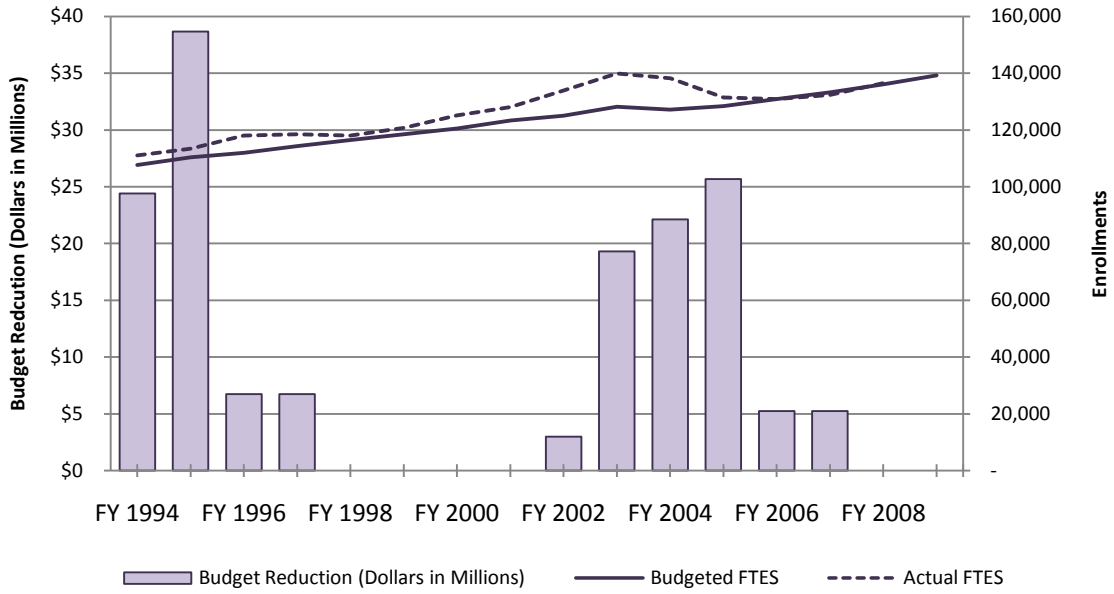


Chart 4
Budget Reductions vs. State Funding Per Student

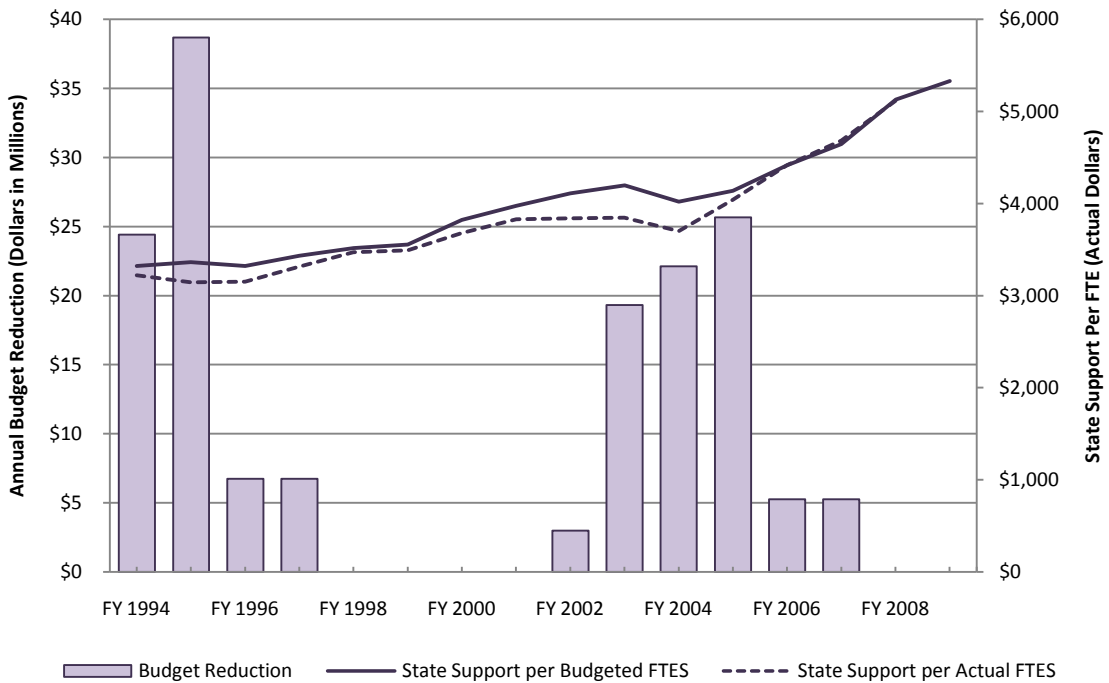


Chart 5
SBCTC History of Salary Increases and Budget Reductions

Fiscal Year	Budget Reduction (Dollars in Millions)	Legislative Description of Budget Reduction	Granted COLA for I-732 Faculty and Staff*	Granted COLA for non-I732 Staff
1994	\$24.4	Increased tuition and took a "tuition revenue offset"; also reduced for "efficiency initiatives" and travel reductions.	-	-
1995	\$38.7	Increased tuition and took a "tuition revenue offset"; also reduced for "efficiency initiatives" and travel reductions.	-	-
1996	\$6.7	2.4% across-the-board reduction	4.0%	4.0%
1997	\$6.7	2.0% across-the-board reduction	-	-
1998	-		3.0%	3.0%
1999	-		-	-
2000	-		3.0%	3.0%
2001	-		3.0%	3.0%
2002	\$3.0	2% reduction in non-instructional programs	3.7%	3.7%
2003	\$19.3	2% reduction in non-instructional programs was made in the original biennial budget followed by 3% across-the-board reduction in the supplemental.	3.6%	-
2004	\$22.1	5% across-the-board reduction.	-	-
2005	\$25.7	5% across-the-board reduction plus \$3.5 million with direction to "waive less tuition"	-	-
2006	\$5.2	1% reduction in non-instructional costs; plus offset for tuition rate increase	1.2%	3.2%
2007	\$5.2	1% reduction in non-instructional costs; plus offset for tuition rate increase	2.8%	1.6%
2008	-		3.7%	3.2%
2009	-		3.9%	2.0%

*I 732 was first implemented in FY 2002.