

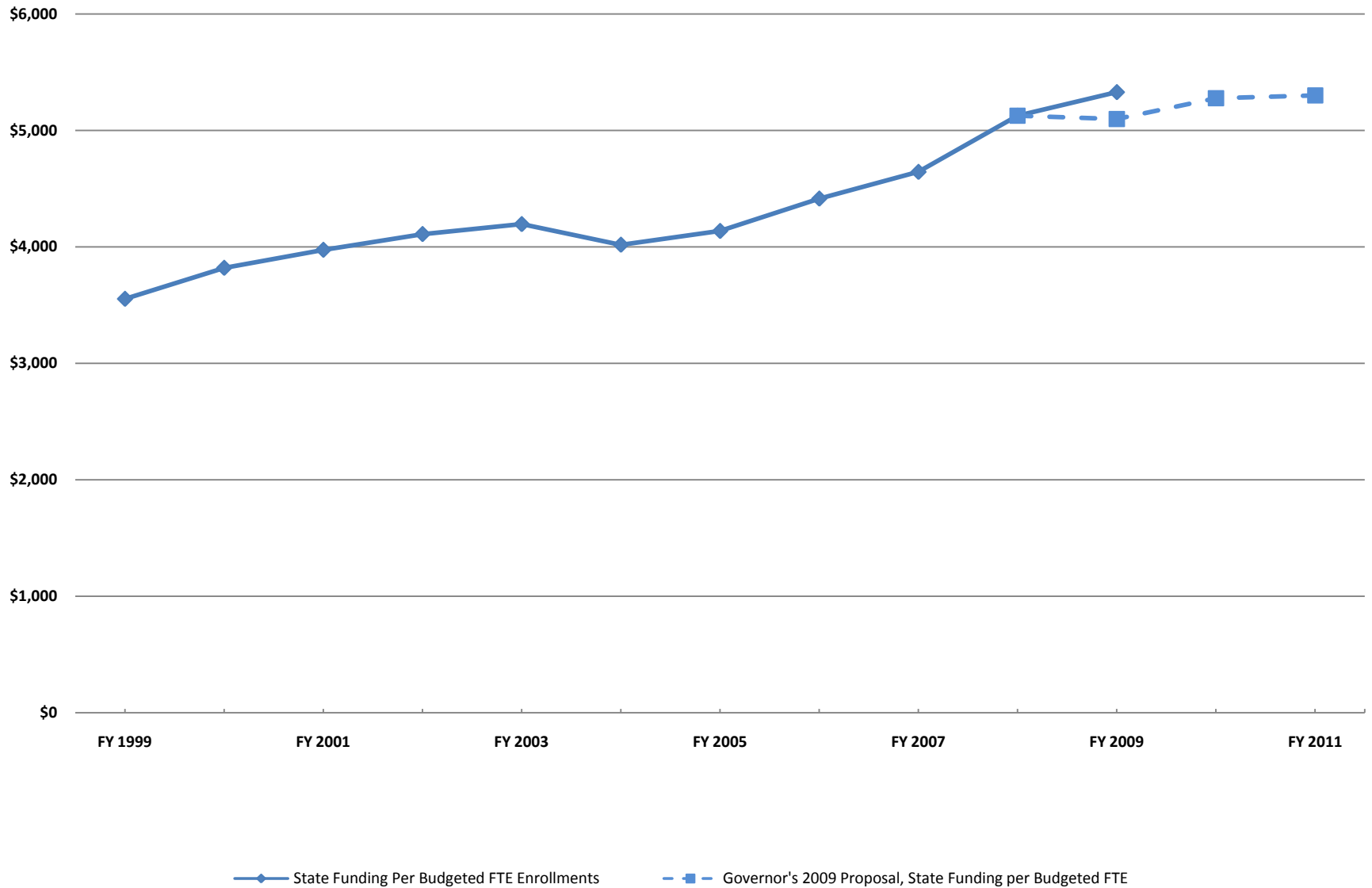
Per Student Funding based on the Governor's 2009-11 Proposed Operating Budget

Chris Reykdal

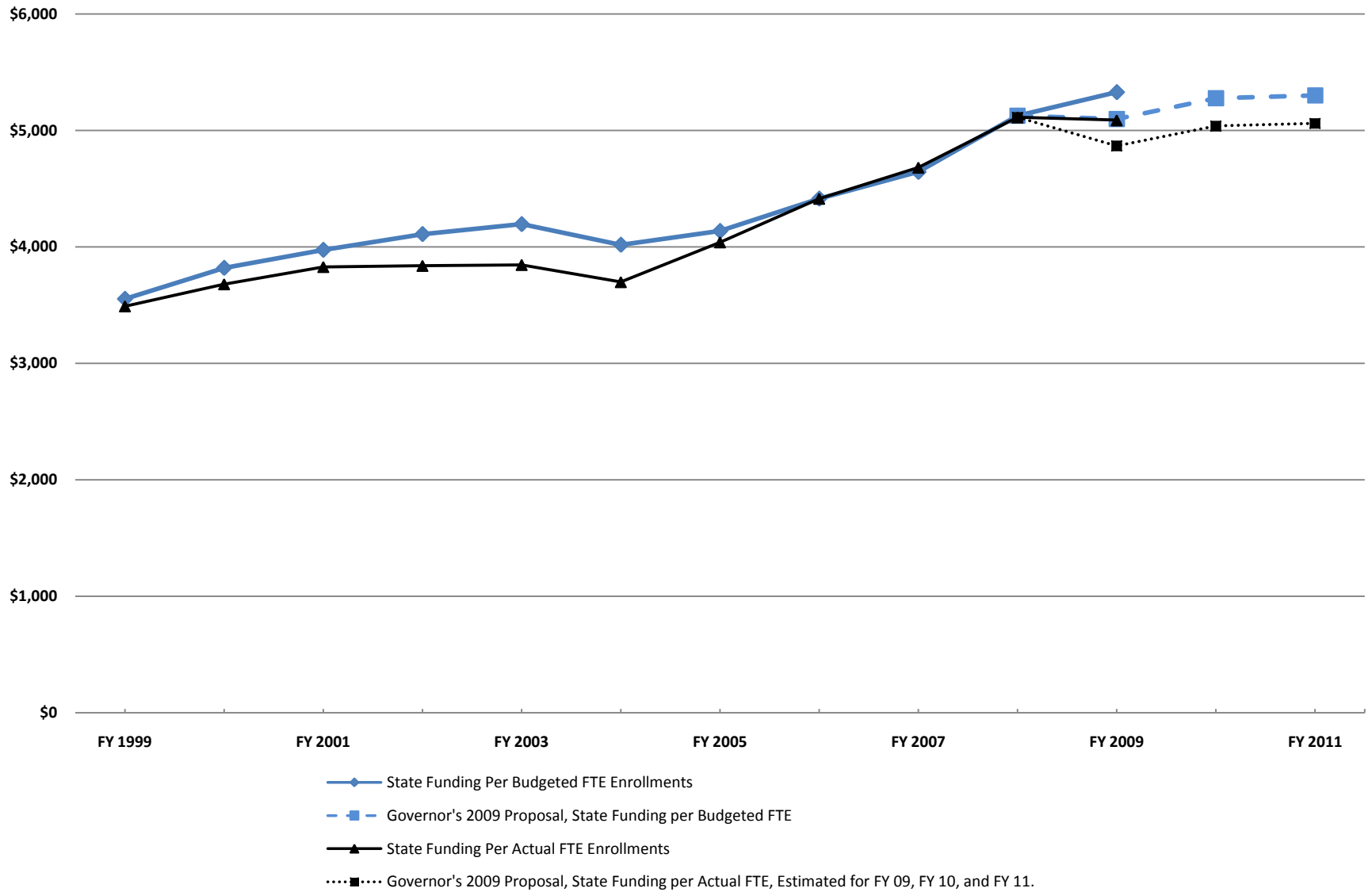
Deputy Executive Director, Finance

January 26, 2009

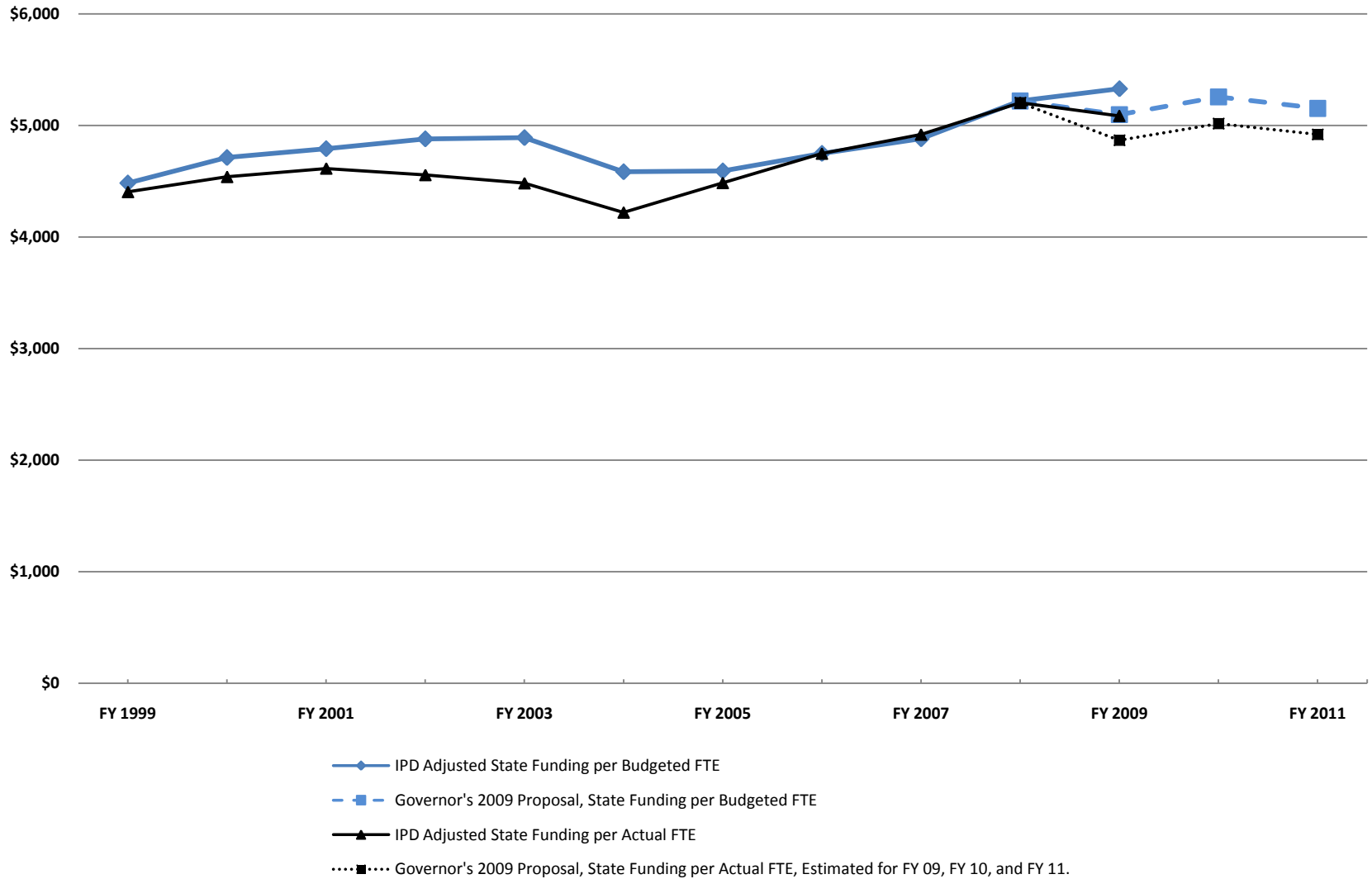
Over the Last Decade, State Funding per FTES Increased. The Governor's Budget Reductions Results in a Drop in Per Student Funding for FY 2009, and Recover by FY 2010 and FY 2011.
 Budgeted and Actual FTES, FY 1999-2009, Nominal Dollars



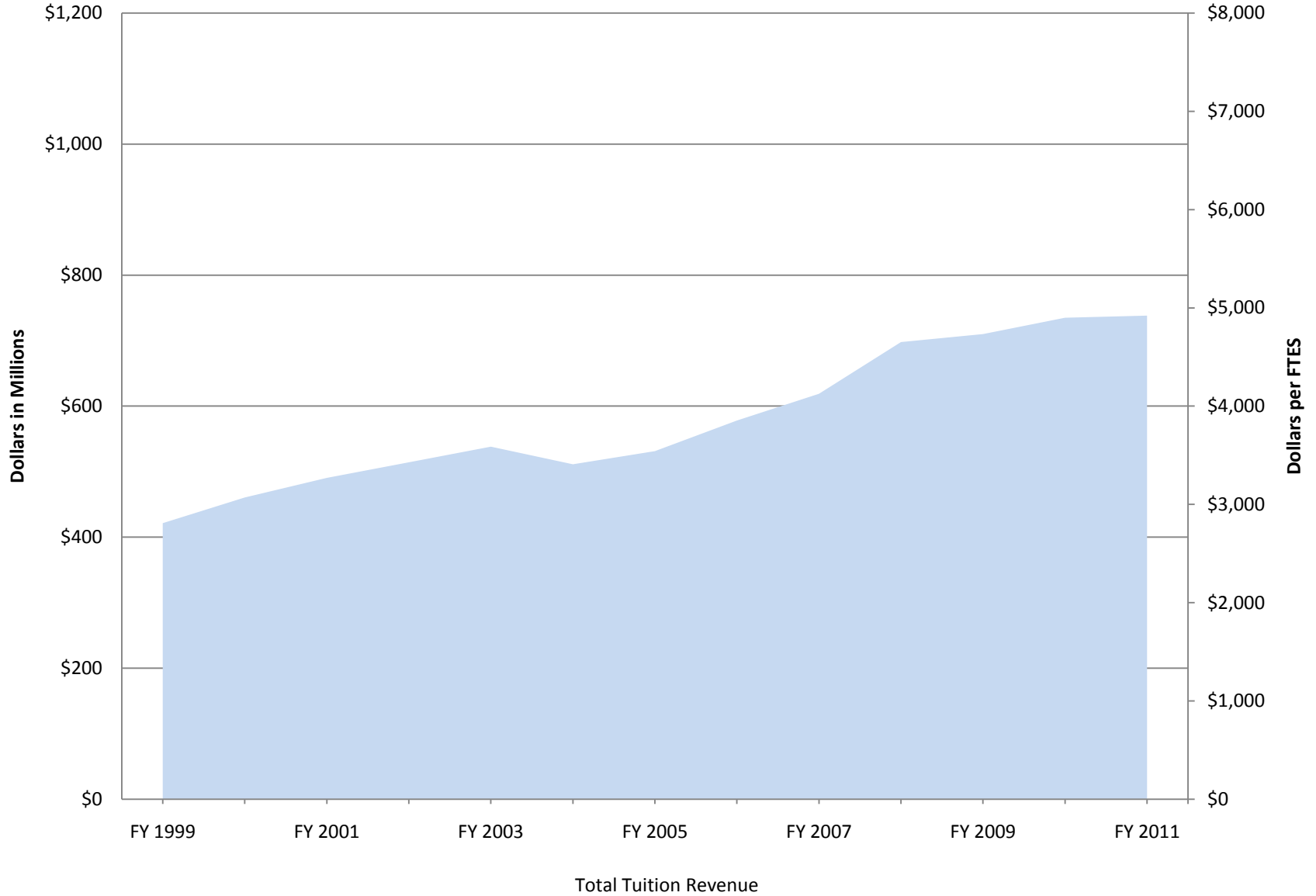
Over the Last Decade, State Funding per FTES Increased. The Governor's Budget Reductions Results in a Drop in Per Student Funding for FY 2009, and Recover by FY 2010 and FY 2011.
Budgeted and Actual FTES, FY 1999-2009, Nominal Dollars



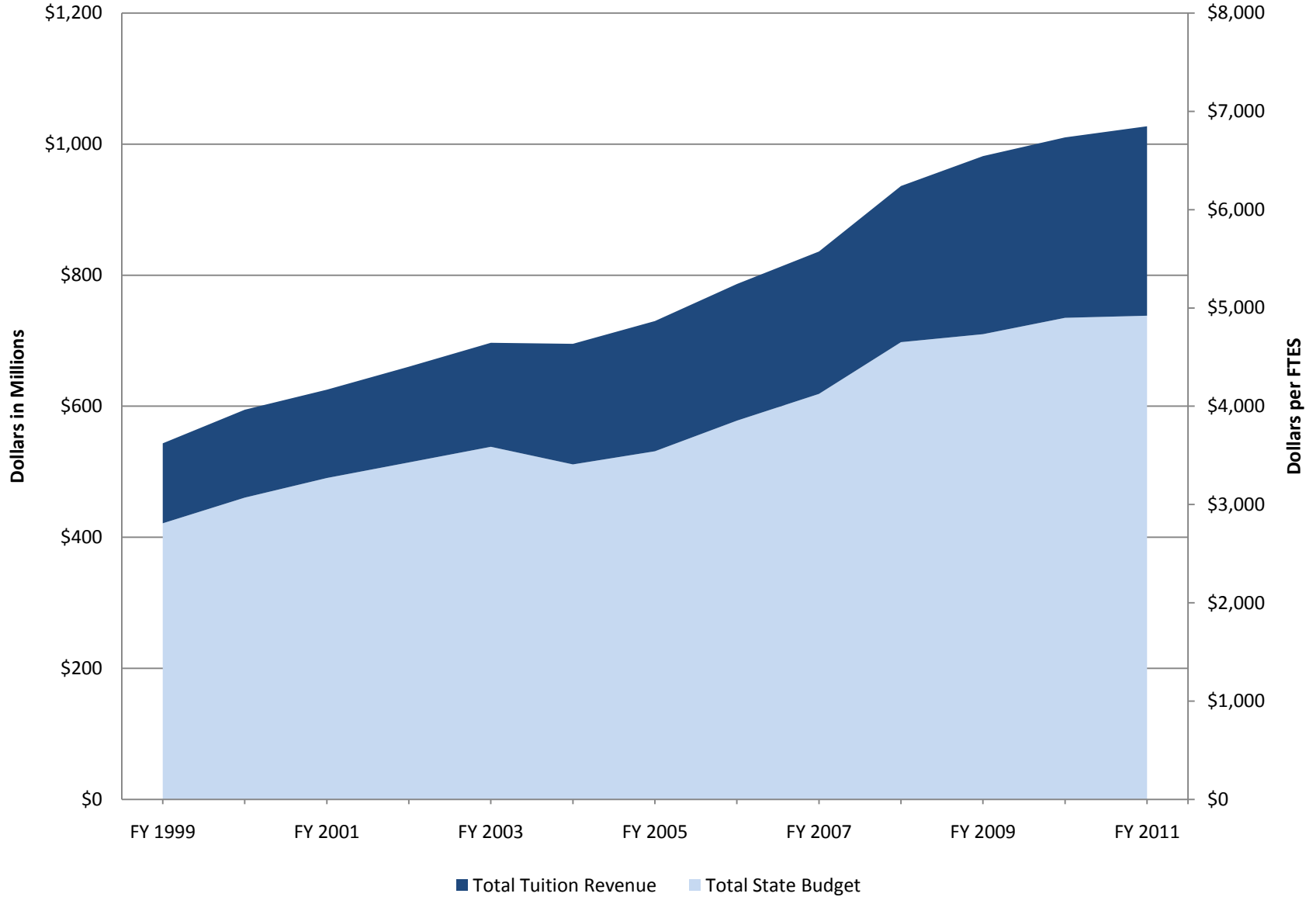
**However, After Adjusting for Inflation, Projected Budget Cuts Combined with Current Enrollment Projections, Will Return Per Student Funding to 2003 Levels (state funds)
However, If Current Actual Student Enrollment Trends Hold**



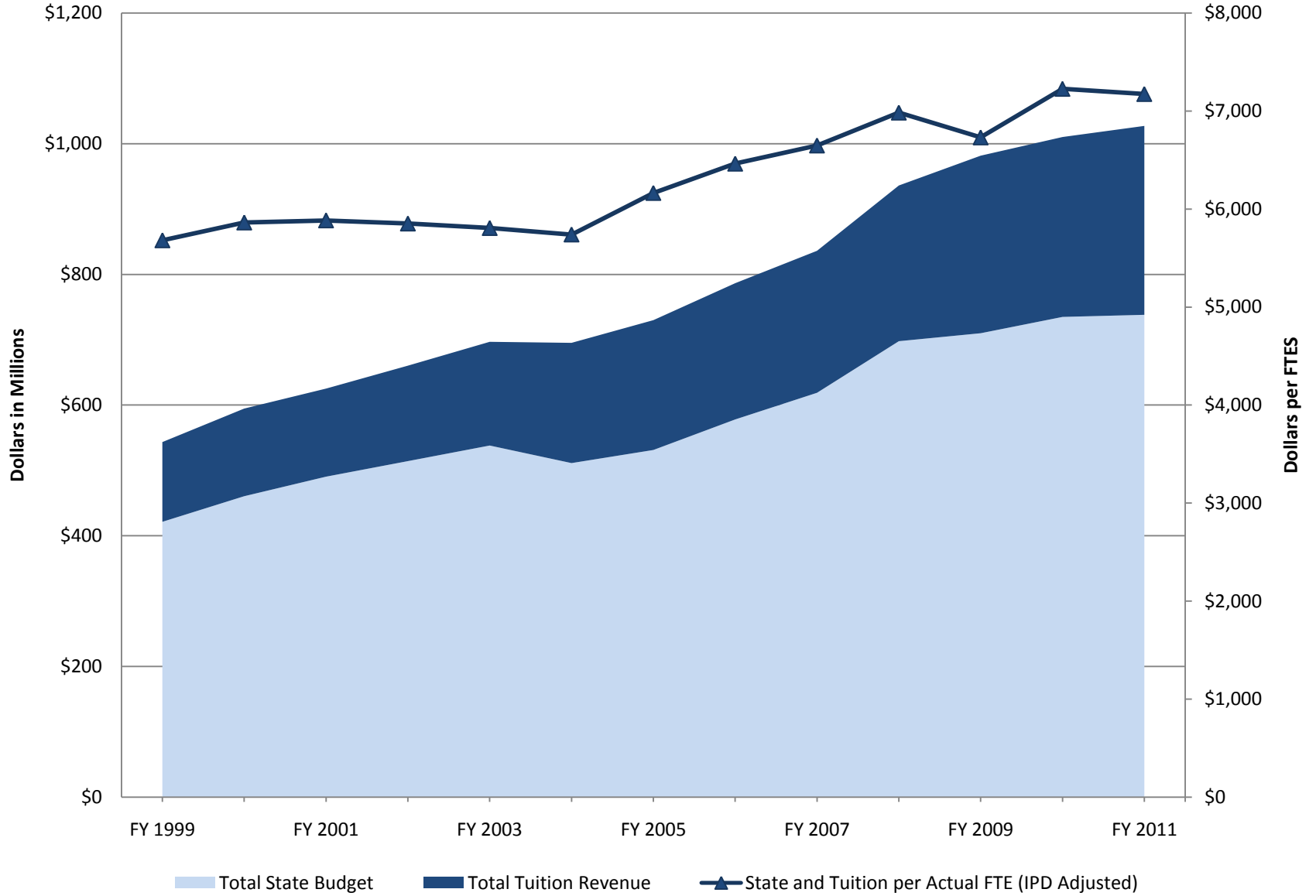
**Previously, Increased Tuition Revenues Cushioned the Colleges From Budget Cuts.
This Trend Will Continue Under the Governor's Budget Proposal.**



**Previously, Increased Tuition Revenues Cushioned the Colleges From Budget Cuts.
This Trend Will Continue Under the Governor's Budget Proposal.**



**Previously, Increased Tuition Revenues Cushioned the Colleges From Budget Cuts.
This Trend Will Continue Under the Governor's Budget Proposal.**



Questions?